

# NATURE SOURCE



Contemporary eco-conscious family of luminaires. Featuring sleek modern housing, integrated motion and sunlight sensors, solar charging, and programmable dimming.



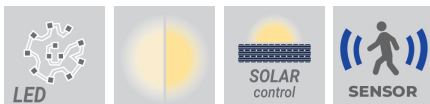
## Luminaire Structure

- Die-cast aluminium end-caps
- Extruded aluminium housing and frame
- Pre-treated before powder coating ensuring high corrosion resistance
- Thermal heat dissipation body
- Stainless steel fasteners in grade 304 with zinc flake coating (ZFC)
- Durable silicone rubber gasket
- Clear glass diffuser
- Solar module consist of monocrystalline high efficiency cells 5x15W
- Lithium Iron Phosphate (LiFePO4 ) battery 2x18Ah 12 VDC
- Solar charger controller system 12V 10A
- Luminaires operation time depends on the weather conditions

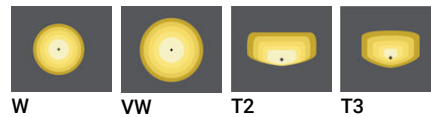
- Full automatic electronic protection function against short circuit, overcurrent, overload, overvoltage and high temperature
- Standard: Off-grid, 100% solar, not connected to the utility grid. Utility grid connection is available upon request
- Without any sun (Autonomy), the battery would last for a maximum of 2 days
- \* Motion sensor integrated
- Different dimming options are available
- STD: 2 Step dimming with motion sensor override (3 hours: 60% without movement, 100% for 1 minute when the motion sensor activated. After 3 hours: 30% without movement, 60% for 1 minute when the motion sensor activated)
- ND: Dusk to Dawn, CT: Custom examples are 5 Step dimming, Custom hours, Custom dimming levels (Step length and minimum dim level is 10%)

- Maximum 35 hours of operation time (2 Step dimming with motion sensor override)
- Remote solar charge controller can be ordered as an accessory
- Autonomy and Operation time calculations are done with the following information: Peak Sun-Hour (PSH) is 3 hours. Hours of operation are 12 hours per day. Detection of movement is 10 times per hour.
- Autonomy and Operation time calculations are only indicative and will depend on several variable factors. Please contact the factory to determine the specific calculations for your project.

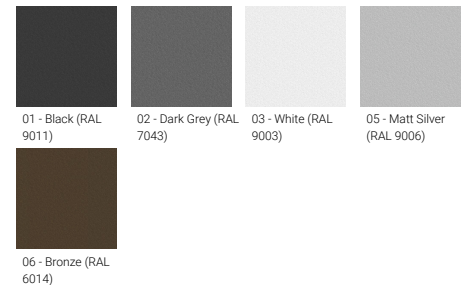
## Feature



## Optic



## Product colour



## Special finishes upon request

We reserve the right to make technical and design changes.

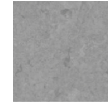
07:03, 05-06-2026

<https://www.ligman.com/nature-source-solar-integrated-post-to-p-luminaire-na-po3/>

**THAILAND**  
LIGMAN Lighting Co.,Ltd.  
17/2 Moo 4, Monthong, Bang Nam Prioao,  
24150 Chachoengsao - Thailand  
[info@ligman.com](mailto:info@ligman.com)



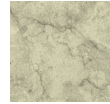
# NATURE SOURCE



SU01 - Concrete - Urban



SU02 - Softscape - Urban



SU03 - Stone - Urban



SU04 - Corten - Urban



SW01 - Oak - Woodland



SW02 - Walnut - Woodland





SW03 - Pine - Woodland

# NATURE SOURCE

## Technical information

	Model number	Light source	Power	Lumen	Optic	CCT / CRI	Dimming type	Weight
<b>11 hours of operation time (2 Step dimming with motion sensor override) – 0.5 days of autonomy</b>								
NATURE SOURCE 1	<b>NAT-20003</b>	28 LED	30 W	3716 - 3977 lm	W [86°], VW [114°], T2 [28°x148°], T3 [37°x151°]	3000K CRI80, 4000K CRI80	Dusk to Dawn, 2 Step dimming with motion sensor override, Solar Custom	25.5 kg
<b>17 hours of operation time (2 Step dimming with motion sensor override) – 1 days of autonomy</b>								
NATURE SOURCE 1	<b>NAT-20002</b>	28 LED	20 W	2528 - 2706 lm	W [86°], VW [114°], T2 [28°x148°], T3 [37°x151°]	3000K CRI80, 4000K CRI80	Dusk to Dawn, 2 Step dimming with motion sensor override, Solar Custom	25.5 kg
<b>35 hours of operation time (2 Step dimming with motion sensor override) – 2 days of autonomy</b>								
NATURE SOURCE 1	<b>NAT-20001</b>	28 LED	10 W	1273 - 1363 lm	W [86°], VW [114°], T2 [28°x148°], T3 [37°x151°]	3000K CRI80, 4000K CRI80	Dusk to Dawn, 2 Step dimming with motion sensor override, Solar Custom	25.5 kg
<b>7 hours of operation time (2 Step dimming with motion sensor override) – 0.5 days of autonomy</b>								
NATURE SOURCE 1	<b>NAT-20004</b>	28 LED	40 W	4568 - 4889 lm	W [86°], VW [114°], T2 [28°x148°], T3 [37°x151°]	3000K CRI80, 4000K CRI80	Dusk to Dawn, 2 Step dimming with motion sensor override, Solar Custom	25.5 kg

## Accessory

	 Remote solar charge controller for Solar Integrated Post Top luminaire <b>A92291</b>	2 m - Cylindrical, straight galvanised steel pole for NATURE SOURCE <b>SPD120140-NAT</b>	3 m - Cylindrical, straight galvanised steel pole for NATURE SOURCE <b>SPD130140-NAT</b>	4 m - Cylindrical, straight galvanised steel pole for NATURE SOURCE <b>SPD140140-NAT</b>	5 m - Cylindrical, straight galvanised steel pole for NATURE SOURCE <b>SPD150140-NAT</b>	6 m - Cylindrical, straight galvanised steel pole for NATURE SOURCE <b>SPD160140-NAT</b>	 Auto dimming feature <b>auto-dim</b>
NAT-20001	•	•	•	•	•	•	•
NAT-20002	•	•	•	•	•	•	•
NAT-20003	•	•	•	•	•	•	•
NAT-20004	•	•	•	•	•	•	•

# NATURE SOURCE

NAT-20001 , NAT-20002 , NAT-20003 , NAT-20004

